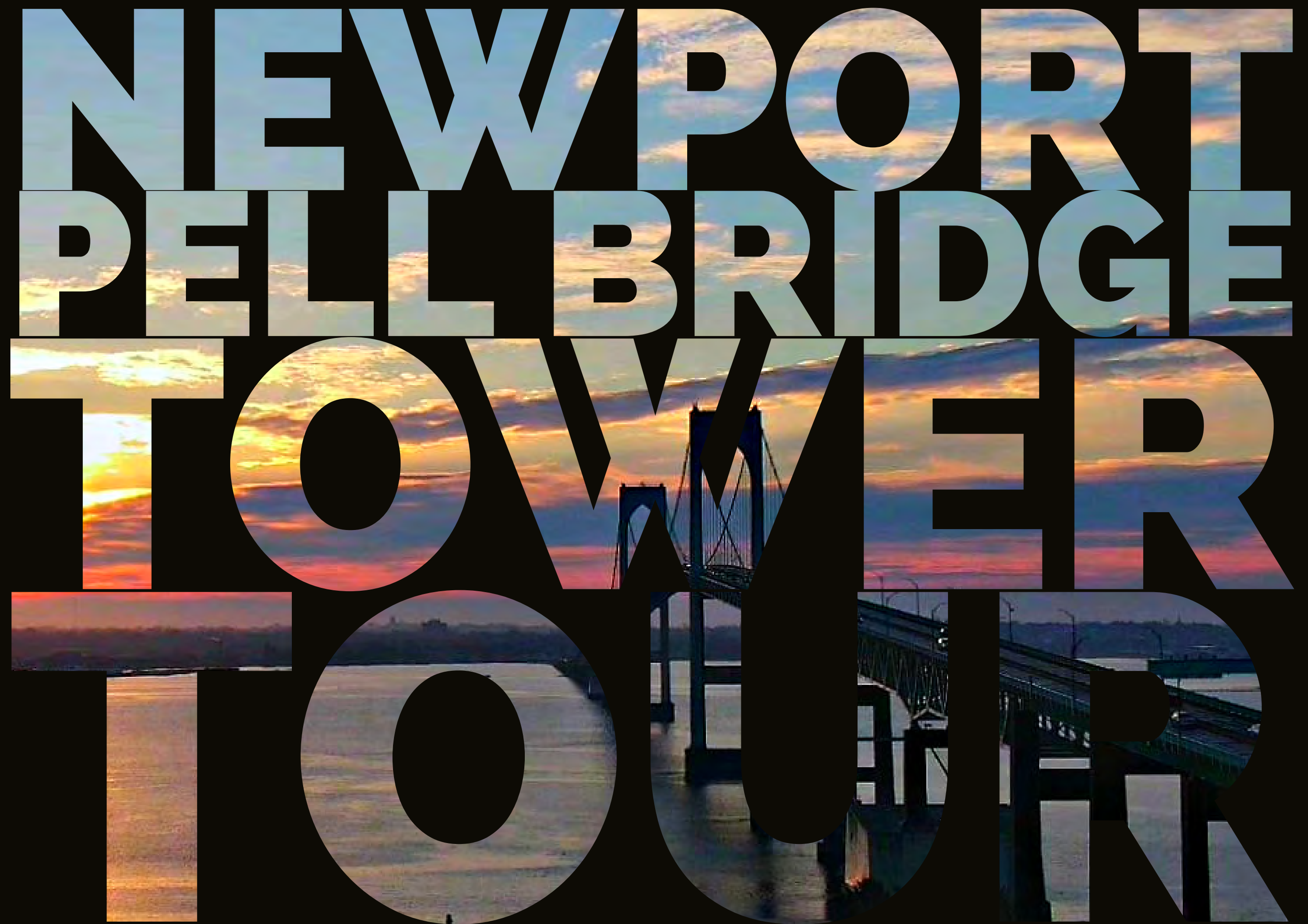


# NEWPORT PELLBRIDGE TOWNER TOWER



THIS IS YOUR  
JOURNEY TO THE  
TOP OF THE PELL



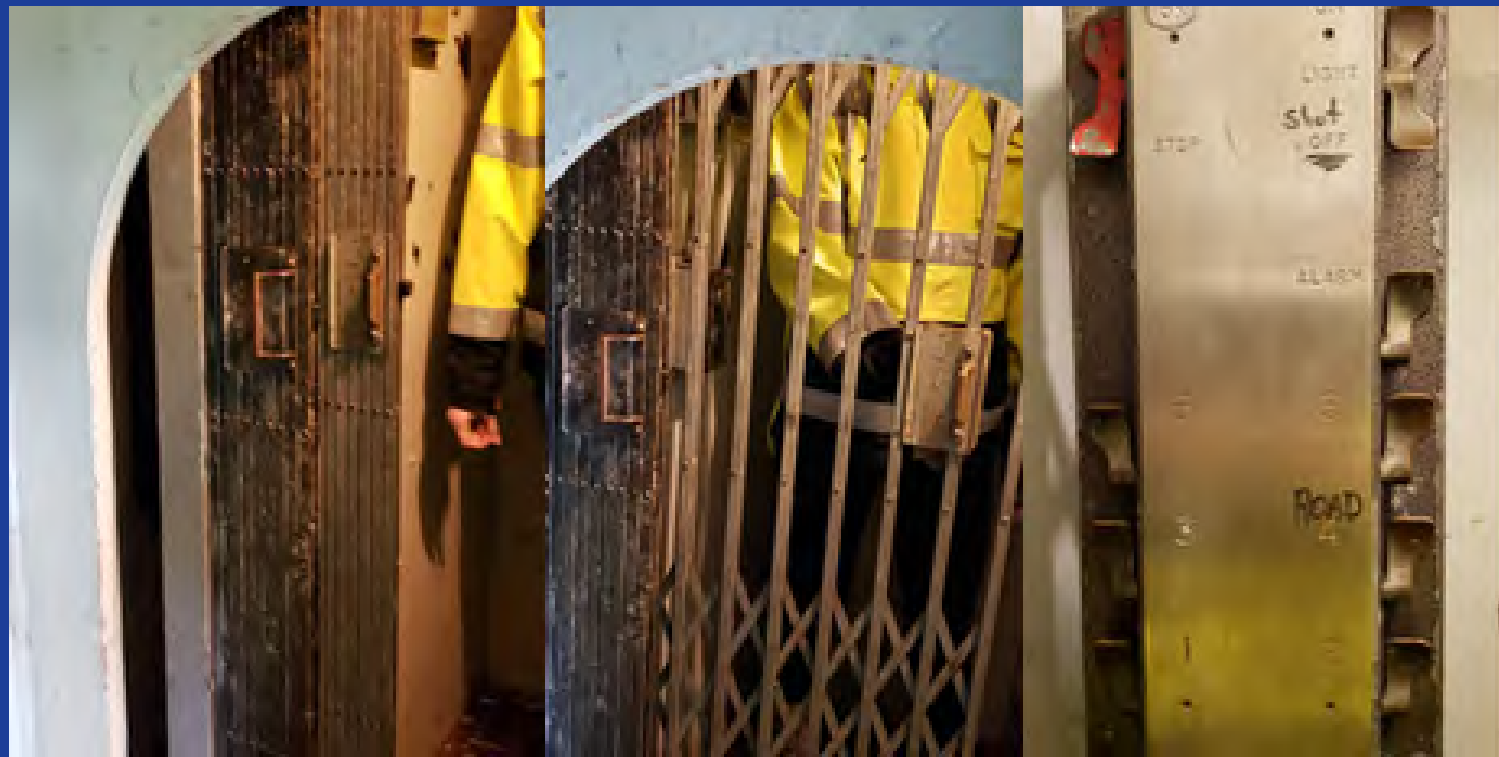
COME JOIN US AT 1 E SHORE RD,  
JAMESTOWN

GET GEARED UP WITH PROPER  
PERSONAL PROTECTIVE EQUIPMENT!

YOU'LL BE DROPPED OFF BY ONE OF OUR  
MAINTENANCE STAFF AND ESCORTED



THIS IS THE ROAD-LEVEL HATCH TO THE  
WEST TOWER, IT IS 21 INCHES WIDE



ONCE INSIDE, LOOK RIGHT AND THERE'S  
THE ELEVATOR! BRINGS YOU UP 140 FEET

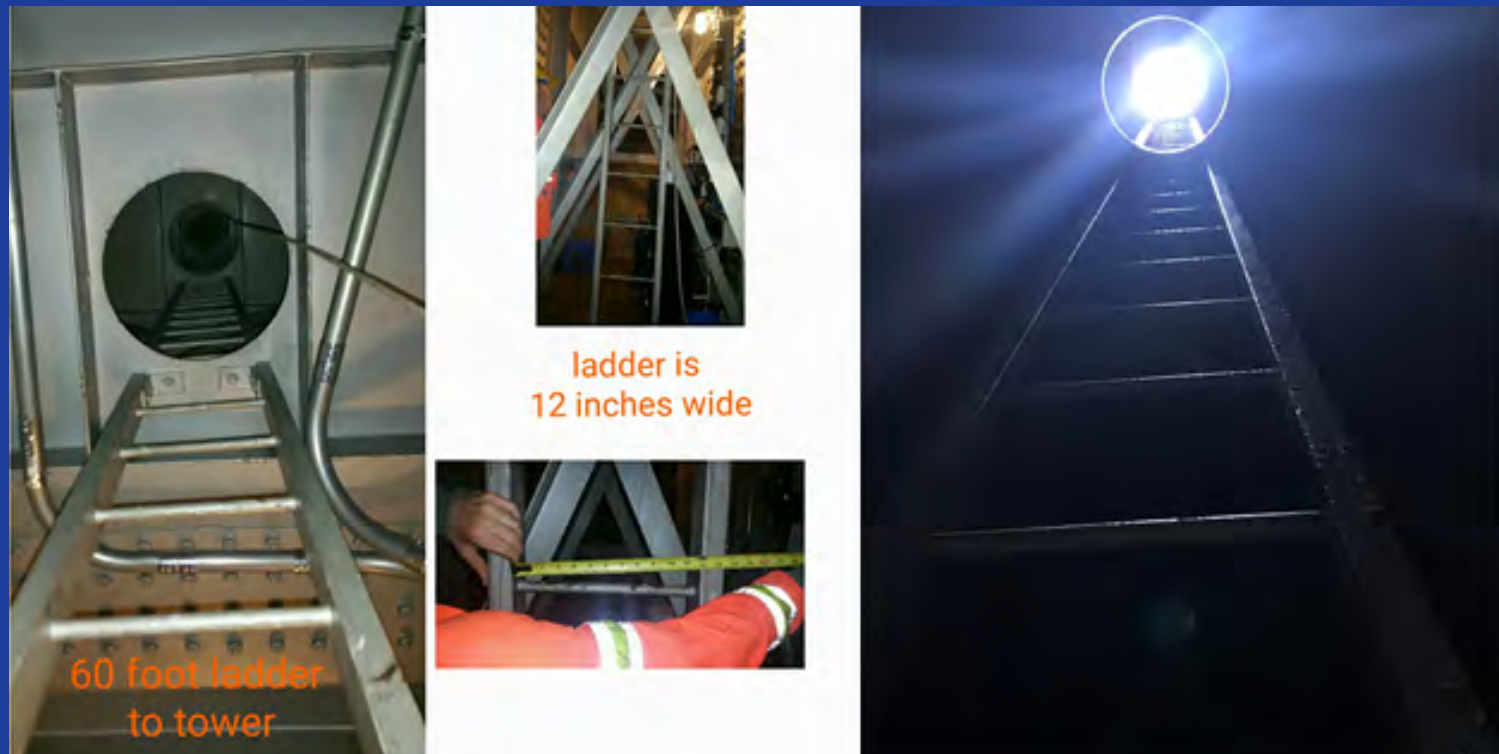


ONCE THE RIDE UP IS OVER, YOU'LL TURN LEFT AND  
ENTER A DIFFERENT CHAMBER WITH A LADDER

NOTE: THE LEFT-HAND TURN OUT OF THE ELEVATOR IS ONLY 12 INCHES WIDE



ONCE IN THE CHAMBER, YOU WILL CLIMB A 60 FOOT LADDER SPLIT INTO THREE 20-FOOT SECTIONS



THE LADDER IS 12 INCHES WIDE AND IT IS VERY DARK UNTIL OUR STAFF OPENS THE TOP HATCH



AT THE TOP OF THE LADDER IS THE FINAL HATCH BEFORE...

# NOW, PLEASE, ENJOY YOUR STAY AT THE TOP OF THE EAST BAY!

- \*THE PELL BRIDGE IS FEATURED  
ON THE RI STATE QUARTER
- \*WHEN YOU ARE ON TOP OF THE  
TOWERS, YOU ARE 400 FEET ABOVE  
SEA-LEVEL
- \*WHEN SKIES ARE CLEAR, YOU CAN  
SEE MARTHA'S VINEYARD 30 MILES  
AWAY!

